

GLOBAL SALES NETWORK

IC TOW TRACTOR 2.0/2.5/3.0t



CE CERTIFICATE



ISO14001: 2004



ISO9001: 2008

HANGCHA GROUP CO., LTD.
(Zhejiang Hangcha Imp. & Exp.Co.,Ltd.)

www.hcforlift.com

Add:398 Shi Qiao Road, Hangzhou Zhejiang province, China(310022)
Factory site:No.88, Donghuan Rd., Economic Development Zone Lin'an, Zhejiang, China(311305)
Tel: +86-571-88926755
Fax: +86-571-88926789 88132890
E-mail: sales@hcforlift.com

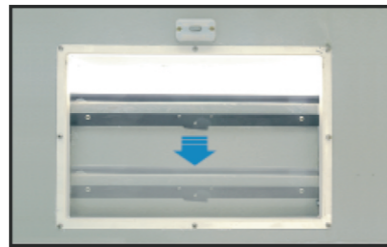
HANGCHA GROUP CO., LTD. Reserves the right to make any changes without notice concerning colors, equipment, or specifications detailed in this brochure, or to discontinue individual models. The colors of trucks, delivered may differ slightly from those in brochures.

2015 VERSION 1/COPYRIGHT 2015/05

HANGCHA GROUP CO., LTD.



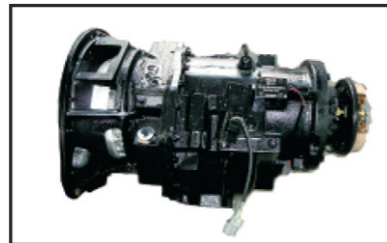
Front window can be open



Translation skylight is the standard configuration for cabin



CUMMINS engine(optional)



OKAMURA transmission(optional)



Three different types of pin meet all demand

Appearance

- Body choosing modern large circular arc streamline surface modeling, low chassis-body, and the cab layout, rich visual sense of tension and strong driving force, is in accordance with international design trend.
- The vehicle appearance is concise, reliable and luxurious.

Safety & Reliability

- The front and beam are made of thick steel plate and welding body, high strength.
- Low body and the cab use skylight, the height of the body remain unchanged, it can protect the roof from the scratch.
- X-type arrangement of dual piping, distribute the pressure by front and rear, the braking system is safe, stable and reliable. The design of vacuum drum ensure the braking system working as usual.
- The hydrodynamic drive system prevents the misoperation of shifting gear.
- The traction device with safe lock and self-locking function, prevent the traction pin from jumping up and wrong operation.
- The electrical switch can cut off the power.

Comfort

- Adopt the new digital dashboard and rocker switch, the status of vehicle can be clear at a glance, simple, reliable and intuitive.
- Adopt horizontal cylinder steering axle and full hydraulic steering gear, the steering force is less than 10N. Optional synchronous steering system provide good stability, especially suitable for long-distance road in the airport and so on.
- The advanced floating suspension system, long wheelbase design, ensure the comfort of the vehicle.

- Optimized design structure can offer a good visibility and easier operation.

Environmental protection

- Low speed high torque motor match well with high efficient transmission, and power is strong, the vehicle with high efficiency, excellent of the economy.
- Emissions are according to national standards, customer can choose dual fuel LPG system, the advanced LPG system is more environmentally friendly and economical.

- Vehicle use non-asbestos material.

Easy maintain

- Opening the cover, the engine, fuel tank, water tank, oil pump, steering gear, brake master cylinder are all exposed, the structure is conducive to the maintenance.
- The reasonable arrangement of electrical controller is easy for maintenance.

Standard Feature

- Emergency disconnect switch
- Head lamp
- Turning lamp
- Rear combined LED
- Water temperature gauge
- Transmission oil temperature warning(hydraulic transmission)
- Transmission oil pressure gauge(mechanical transmission)
- Neutral safety switch(hydraulic transmission)
- Fuel gauge
- Engine oil pressure warning
- Full hydraulic power steering
- Sun shield
- Louver
- Equipment of opening front window
- Front wiper
- Adjustable device for steering wheel

- Horn
- Buzzer
- Hour meter
- Rear view mirror
- Dome light
- Fan
- Large rubber pedal pad
- Hand grip
- Full closed cab
- Vacuum assistant braking system
- Standard seat
- Toolbox
- Traction pin
- Retroreflector

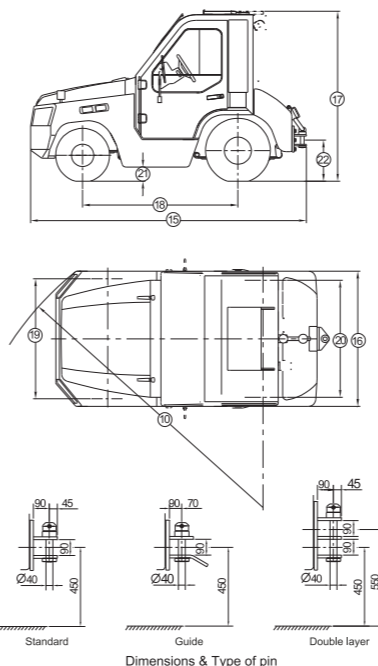
Options

- Warning lamp
- Rear working lamp
- Speed limit alarm
- Protective bracket of front lamp
- Different height of traction pin
- Semi-closed cab
- Windshield washer fluid
- Steam air heater
- Defroster
- Synchronous steering system
- Defrost device of front window
- Hydraulic assistant brake system
- Front and rear bumpers
- Front pothook
- Extinguisher
- High inlet
- Dual air filters
- Cap lock of fuel tank
- Solid tyre
- Coaming of the rear platform
- Wide base tyre
- Customer painting
- Little weight
- Air-condition

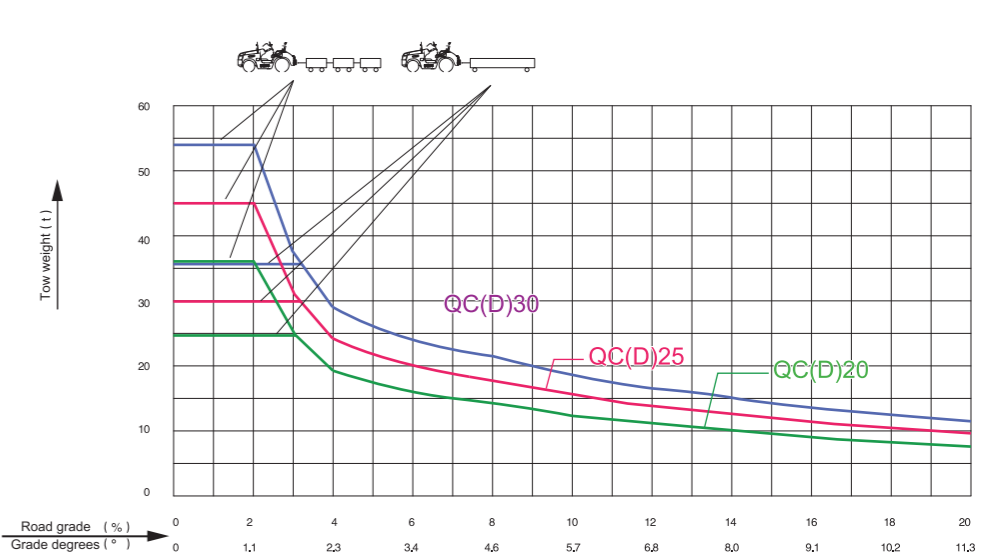
		Model	QCD20-JW10B-12	QCD20-JW22B-12	QCD25-JW22B-12	QCD20-JW22B-Y	QCD25-JW22B-Y	QCD20-JW33B-12	QCD25-JW33B-12	QCD30-JW33B-12	
Parameter		TYPE	Airport	Airport	Airport	Airport	Airport	Airport	Airport	Airport	
Performance	Maximum Drawbar Pull	N	20000	20000	25000	20000	25000	20000	25000	30000	
	Towing Weight	One towing pallet	kg	26000	26000	33000	26000	33000	26000	33000	36000
		Two towing pallet	kg	39000	39000	49000	39000	49000	39000	49000	54000
	Max. Traveling Speed	Forward	Shift 1	km/h	16.1	18	18	18	16	16	13
			Shift 2	km/h	30	32.5	32.5	32.5	29	25.5	
		Backward	Shift 1	km/h	20.6	14	14	14	20	17.5	
Min. Turning Radius (outside)	mm	3250	3250	3250	3250	3250	3250	3250	3250		
Max. Gradeability (Shift1)	%	30	30	30	30	30	30	30	30		
Weight	Weight distribution	Front	kg	1070	970	895	970	895	1045	960	990
	Rear	kg	2030	2200	2555	2220	2575	2205	2560	3020	
weight		kg	3100	3170	3450	3190	3470	3250	3520	4010	
Dimensions	Overall Length	mm	3020	3020	3020	3020	3020	3020	3020	3020	
	Overall Width	mm	1480	1480	1480	1480	1480	1480	1480	1480	
	Overall Height	mm	1826	1826	1826	1826	1826	1826	1826	1826	
	Wheel Base	mm	1700	1700	1700	1700	1700	1700	1700	1700	
	Track	Front	mm	1315	1315	1315	1315	1315	1315	1315	1260
		Rear	mm	1280	1280	1280	1280	1280	1280	1280	1260
	Min. Clearance to ground	mm	120	120	120	120	120	120	120	120	
	Track rod center height	mm	450	450	450	450	450	450	450	450	
Transmission&Battery	Battery Voltage/Capcity(20HR)	V/AH	12/95	12/65	12/65	12/65	12/65	12/95	12/65	12/95	
	Transmission	Manufacture	OKAMURA	OKAMURA	OKAMURA	OKAMURA	OKAMURA	OKAMURA	OKAMURA	OKAMURA	
		Type	Hydraulic	Hydraulic	Hydraulic	Hydraulic	Hydraulic	Hydraulic	Hydraulic	Hydraulic	
		Gear Fwd/Rvs	2/1	2/1	2/1	2/1	2/1	2/1	2/1	2/1	
	Steering mode		Y43300X	Y43300X	Y43300X	Y43300X	Y43300X	Y43300X	Y43300X		
	Brake	Service braking	Vacuum power brake	Vacuum power brake	Vacuum power brake	Vacuum power brake	Vacuum power brake	Vacuum power brake	Vacuum power brake	Vacuum power brake	
Park braking		Mechanical	Mechanical	Mechanical	Mechanical	Mechanical	Mechanical	Mechanical	Mechanical		
Tire	Front	6.50-10-10PR	6.50-10-10PR	6.50-10-10PR	6.50-10-10PR	6.50-10-10PR	6.50-10-10PR	6.50-10-10PR	6.50-10-10PR		
	Rear	7.00-12-12PR	7.00-12-12PR	7.00-12-12PR	7.00-12-12PR	7.00-12-12PR	7.00-12-12PR	7.00-12-12PR	28×9-15-12PR		
Engine	Model		C240-PKJ-30	K25	K25	K25	K25	4TNE98	4TNE98	4TNE98	
	Manufacture		ISUZU	NISSAN	NISSAN	NISSAN	NISSAN	YANMAR	YANMAR	YANMAR	
	Power type		Diesel	Gasoline	Gasoline	LPG	LPG	Diesel	Diesel		
	Displacement	L	2.369	2.488	2.488	2.488	2.488	3.319	3.319		
	Rated capacity	KW/(r/min)	34.3/2500	37.4/2300	37.4/2300	37.4/2300	37.4/2300	42.1/2300	42.1/2300		
	Rated Torque	N·m/(r/min)	137.7/1800	176.5/1600	176.5/1600	176.5/1600	176.5/1600	186/1700	186/1700		
	Bore×Stroke	mm	86×102	89×100	89×100	89×100	89×100	98×110	98×110		
Emission STD.		Euro III	Euro III	Euro III	Euro III	Euro III	Euro III	Euro III			
Fuel tank capacity	L	85	85	85	85	85	85	85			

Remark: 1.The maximum drawbar pull in the table are measured in dry concrete level off the road(Attachment coefficient of 0.8),the maximum drawbar will change as Attachment coefficient.
2.Specifications are subject to change without notice.

Dimensions



Chart



The tow weight (include tow truck and cargo) in the table are measured in dry concrete level off the road(friction coefficient of 0.015-0.018),the tow weight will change as friction coefficient.